

Thursday, 23rd May 2024
Afternoon

14:00 Welcome to Manchester

Nicholas Lord, UoM

- What we've done, and where we're going...

Organizational Crime and ESG

Panel 1

ESG on Company Level: Just more Paperwork?

14:30 ESG in the UK

Katie Benson, Jon Davies, Nicholas Lord,
UoM

15:00 ESG around the Globe: The Challenge of International Comparisons

Raphael Bischof, HU

15:30 Coffee Break

Panel 2

How to Analyze the Impact of Regulations

16:00 ESG and Due Diligence – Germany and the EU

Markus Pohlmann, HU

16:30 Legislative Impact Assessment in Germany

Kristina Höly, HU

Evening Meal - TBC

Friday, 24th May 2024
Morning

Opportunities, Topics, Methods, Analytical Frames

Panel 3

Prospective opportunities & topics

09:00 Organisational (Non-)Compliance and Food Fraud

Nicholas Lord, Jon Davies, UoM

09:30 The Criminal Script of Illegal Logging

Monika Bancsina, HU

10:00 Coffee Break

10:30 Target funds:

- Manchester–Heidelberg Research Fund
- EU Horizon
- VW Foundation
- Bilateral UK-Germany Funding
- Trilateral Funding UK-G-B

11:30 What next?

- ESG
- IFFS and politics
-

12:30 Lunch

Friday, 24th May 2024
Afternoon

Panel 4

Methods and Analytical Frames

13:00 The Advantages and Disadvantages of Factorial Surveys

Kim Kettner, Monika Bancsina, HU
Jing Wei, UoM

13:45 Crime Script and Network Analysis > Explanation by Mechanism

Nicholas Lord / Tom Diviák, UoM

14:45 Experimental Workshops and Serious Gaming as Prevention Tools

Monika Bancsina, Iona Todosi, HU

15:00 Corporate Ownership Structures

Pete Duncan, Nicholas Lord, UoM

15:30 *Guided walking tour in the afternoon about Germany's influence on Manchester*

End of the Workshop

Evening Meal - TBC

About the Workshop

On April, 24th the EU parliament approved the **Corporate Sustainability Due Diligence Law**, moving it one step closer to formal adoption by the European Union. The CSDDD creates a legal liability for companies relating to environmental and human rights violations within their supply chain. The Workshop asks against this background, how companies deal with the new ESG regulations.

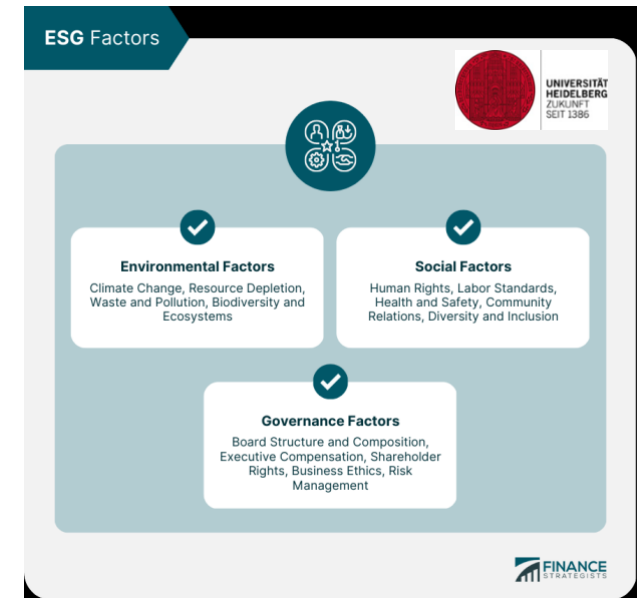
Thus, panel 1 explores the impact of ESG on company level. Does it just generate more paperwork or is it a gamechanging regulation? Panel 2 asks accordingly, how we can analyze the impact of new legislations, and how this is to be done in international comparisons. Panel 3 is taking up the question of prevention concerning food fraud, and environment protection. And panel 4 is discussing some new analytical frames and techniques to analyze the dark field of organizational wrongdoing and to foster the prevention of the misconduct inside companies. Last, but not least is panel 5 introducing new research perspectives of the Heidelberg-Manchester-connection.

Contact & Organization

Prof. Dr. Nicolas Lord
University of Manchester

Prof. Dr. Markus Pohlmann
Heidelberg University
Max-Weber Institute of Sociology
Bergheimer Straße 58
69115 Heidelberg
Germany
Tel. +49-6221-54 2971
Email: markus.pohlmann@mwi.uni-heidelberg.de

Dr. Raphael Bischof dos Santos
Heidelberg University
Max-Weber Institute of Sociology
Bergheimer Straße 58
69115 Heidelberg
Germany
Tel. +49-6221-54 2973
Email: raphael.bischof@mwi.uni-heidelberg.de



ESG: Impact Assessment and Crime Prevention Human Rights Violations, Food Fraud, and Environmental Crime

23rd – 25th May 2024

Manchester University

John Owens Building
Ken Kitchen Committee Room